



REALWHEELS COVER COMPANY, INC.

3940 Tannahill Drive • Gurnee, IL 60031 • 847-662-7722 • Fax 847-662-7744 • www.realwheelsacc.com
info@realwheelsacc.com • toll-free 1-800-982-1180

Hummer and H2 are registered trademarks of General Motors Corporation and are used for identification purposes only.
RealWheels Cover Company, Inc. and its products are not affiliated with General Motors Corporation products.

Front Door Handle Installation...pages 1 to 5

Rear Door Handle Installation...pages 6 to 9

Tools Needed: 10mm Socket, Phillips Screwdriver, Utility Knife, Door Panel Removing Tool **Time to install: Approx. 3 to 4 Hours**

IMPORTANT: Read And Understand All Instructions Before Installation • QUESTIONS? CALL 1-800-982-1180

CUSTOM OVERSIZED BILLET ALUMINUM FRONT DOOR HANDLES FOR THE HUMMER H2



STEP 1

STEP 1. Open Front Door with window in closed position.



STEP 2

STEP 2. Remove Phillips head screw located behind the interior door handle.



STEP 3

STEP 3. Remove the interior door handle bezel by holding the door handle open and maneuvering the bezel around it.



STEP 4

STEP 4. With a ratchet and 7mm socket, remove the two bolts located behind the interior door hand bezel.



STEP 5

STEP 5. Pop out the interior door panel with a panel remover, by starting at the corner of the panel and working back towards the bottom inside portion of the panel. NOTE: removing the panel takes a bit of force, but don't worry, the panel will be okay.



STEP 6

STEP 6. Continue to remove the interior panel by pulling it away from the door. **Important:** Do not pull the panel completely away from the door because there are wires still connected to the panel.



STEP 7

STEP 7. Pull the courtesy light out of its location



STEP 8

STEP 8. Unplug the power window switch plugs (Five of them).



STEP 9

STEP 9. Set the interior door panel out of your way and remove the power window switches by unclipping the six clips holding the switch panel in place.



STEP 10A

STEP 10. Cut the colored insulation with a sharp blade around the interior door handle (See 10A). Then pull the colored insulation back from the upper outside of the door all the way off and set it out of your way (See 10B).



STEP 10B



STEP 11

STEP 11. Locate and loosen the two window glass clamps. Only do 1½ to 2 full rotations to loosen. **Do Not** fully remove these nuts.



STEP 12

STEP 12. Reconnect the DDM and black plug closest to the DDM on your power window switch panel and lower your window. Then remove the lower window weather stripping from the door.



STEP 13

STEP 13. Remove the two glass side rail bolts and place the slide rail down towards the bottom of the door. Then lower the glass down to the bottom of the door by first lifting up on the glass and unhooking it from the glass hooks.



STEP 14

STEP 14. Remove the white or clear hole cover tabs. (Depending on the model year, you may need to remove the two rubber plugs.)



STEP 15

STEP 15. Locate the three door handle bezel screws from the inside of the door and start removing the screw with a 10mm socket. On the third screw, be sure to hold the door handle bezel from the outside of the vehicle so the bezel does not fall out and scratch your H2.



STEP 16A



STEP 16B



STEP 16C

STEP 16. Pull the door handle assembly out of the vehicle and unclip the upper and lower rod clips.



STEP 17

STEP 17. Remove the door handle and door handle bezel assembly from the truck.



STEP 18

STEP 18. This is what the door handle assembly looks like when removed from your H2.

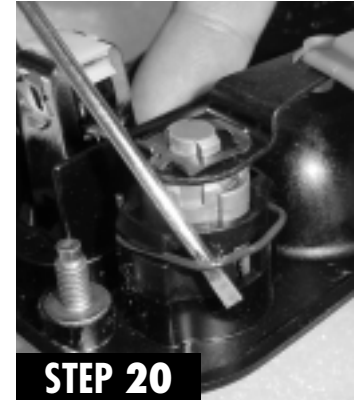


STEP 19A

STEP 19. With possible assistance from another person, hold one end of the door handle pin with pliers and drill out the other end (See 19A). You could also use a grinder (See 19B).



STEP 19B



STEP 20

STEP 20. Remove the U-shape locking pin with a screwdriver around the door key lock.



STEP 21

STEP 21. With a object that has an outside diameter of 5/8" (we use a craftsman 7/16 6-point socket), use a hammer to knock the key lock through the plastic door handle bezel. Note: Anything smaller than 5/8" may damage your lockset.



STEP 22

STEP 22. Remove the drilled out pin from the door handle assembly.



STEP 23

STEP 23. With a pair of pliers, clamp the one end of the plastic spring pin and pull it out of the door handle bezel assembly. **Note:** Remember the location of the spring because it will have to go back in the same position on your new oversized billet door handle.



STEP 24

STEP 24. Remove the door handle from the door handle bezel.



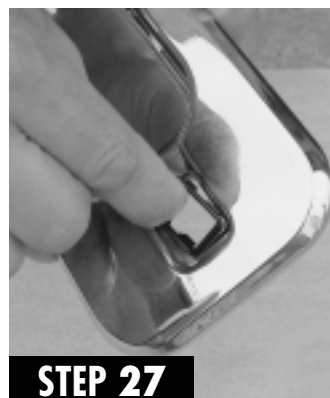
STEP 25

STEP 25. Remove the black plastic clip from the door handle bezel.



STEP 26

STEP 26. This is what the entire door handle assembly should look like fully disassembled.



STEP 27

STEP 27. Now take your new billet door handle bezel and replace the black plastic handle clip.



STEP 28

STEP 28. Replace the factory door handle or new billet door handle in the billet door handle bezel.



STEP 29

STEP 29. Replace the drilled out metal pin with your new pin included in your kit back through the door handle. Note: A hammer may be required for a little friendly persuading.



STEP 30A

STEP 30. Replace the door handle key lock into your oversized billet door handle and reclip your U-shape clip.

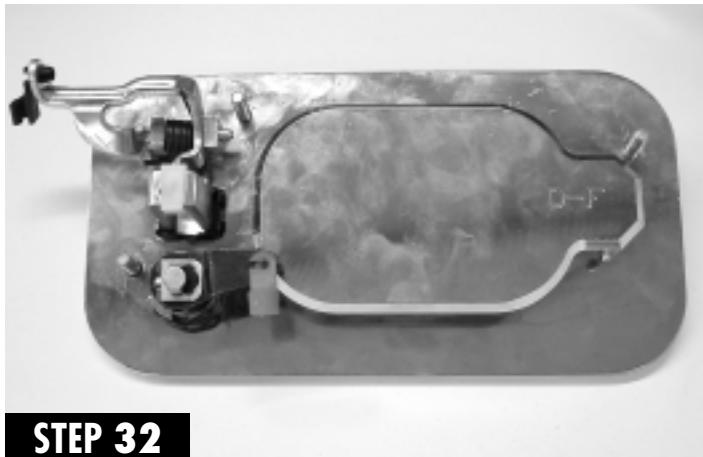


STEP 30B



STEP 31

STEP 31. Realign the spring setup and replace the plastic door handle pin with your new metal pin included in your kit and put it through the door handle bezel.



STEP 32

STEP 32. This is what your door handle bezel should look like now fully reassembled



STEP 33A



STEP 33B

STEP 33. Before replacing the door handle back in the door, first reclip the upper and lower rods back into place, then replace the door handle assembly back in the door.



STEP 34

STEP 34. Replace the three 10mm bolts into the door handle assembly and check for proper alignment. **Do Not** over tighten, just give it a nice snug fit.



STEP 35

STEP 35. Replace the two clear plastic tabs over the bolt holes. (Depending on the model year, replace the two rubber plugs.)



STEP 36

STEP 36. Pull your window back up into the hooks and raise the window back into the up position.



STEP 37

STEP 37. Realign your slide track from the bottom of the door and tighten up the two bolts. Note: Try to make the screws line up with the marks on the door for proper window sliding.



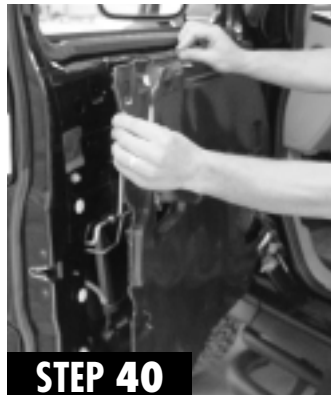
STEP 38

STEP 38. Lower your window to check proper movement and then reattach the lower weather stripping.



STEP 39

STEP 39. Raise the window and retighten your two window glass clamps but only 1½ to 2 full turns. **Do not** over tighten.



STEP 40

STEP 40. Unplug your power window switch panel and realign the colored insulation and press firmly against the door.



STEP 41

STEP 41. Popout the door lock switch from the door panel.



STEP 42A

STEP 42. Reconnect the power window switch plugs and put the courtesy light back in place.

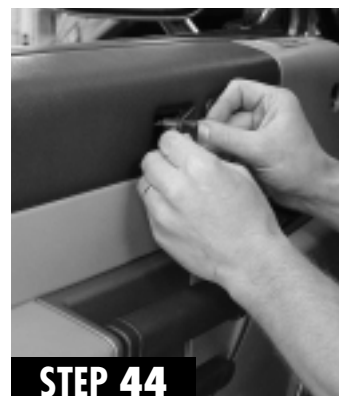


STEP 42B



STEP 43

STEP 43. Realign the door panel and push back into locking position



STEP 44

STEP 44. Line up the door lock and door lock switch. Push the door lock switch back into place.



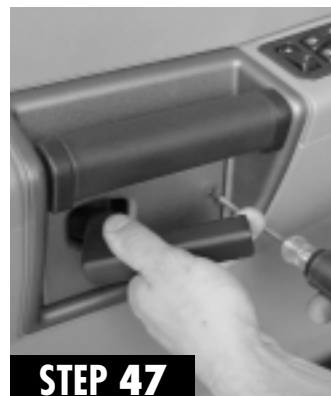
STEP 45

STEP 45. Replace the two 7mm bolts that go behind the interior door handle bezel.



STEP 46

STEP 46. Replace the interior door handle bezel around the interior door handle.



STEP 47

STEP 47. Replace the Phillips head screw behind the interior door handle into the interior door handle bezel. Take a break, and admire how much better your H2 looks now!



STEP 48

STEP 48. Take a break and admire how much better your H2 looks now!

CUSTOM OVERSIZED BILLET ALUMINUM REAR DOOR HANDLES FOR THE HUMMER H2

IMPORTANT: Read And Understand All Instructions Before Installation • QUESTIONS? CALL 1-800-982-1180



STEP 1

STEP 1. Open Rear Door with window in closed position.



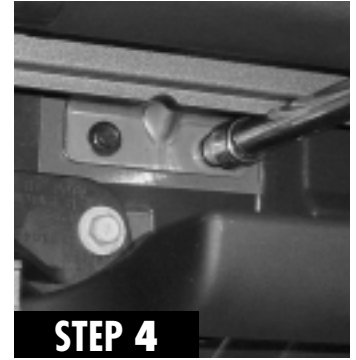
STEP 2

STEP 2. Remove Phillips head screw located behind the interior door handle.



STEP 3

STEP 3. Remove the interior door handle bezel by holding the door handle open and maneuvering the bezel around it.



STEP 4

STEP 4. With a ratchet and 7mm socket, remove the two bolts located behind the interior door hand bezel.



STEP 5

STEP 5. Remove the upper panel located by the window by just pulling it outward.



STEP 6

STEP 6. Pop out the interior door panel with a panel remover, by starting at the corner of the panel and working your way to the top of the panel. Then back towards the bottom inside portion of the panel. NOTE: removing the panel takes a bit of force, but don't worry, the panel will be okay.



STEP 7

STEP 7. Continue to remove the interior panel by pulling it away from the door. **Do not** pull the panel completely away from the door because there are wires still connected to the panel.



STEP 8

STEP 8. Pull the courtesy light out of its location.



STEP 9

STEP 9. Unplug the power window switch plug.



STEP 10

STEP 10. Set the interior door panel out of your way.



STEP 11A



STEP 11B



STEP 11. Pull the colored insulation back from the upper outside of the door, but only pull it back 1/4 of the way. This is all that is necessary. (Depending on the model year, you may need to use a utility knife to carefully cut the insulation away.)





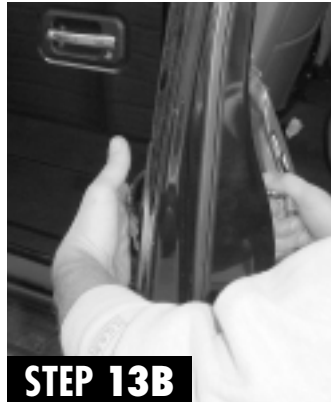
STEP 12

STEP 12. Remove the two plastic tabs that cover the two screw holes. (Depending on the model year, you may need to remove the two rubber plugs.)



STEP 13A

STEP 13. Locate the three door handle bezel screws from the inside door and start removing the screw with a 10mm socket. On the third screw, be sure to hold the door handle bezel from the outside of the vehicle so the bezel does not fall out and scratch your H2.

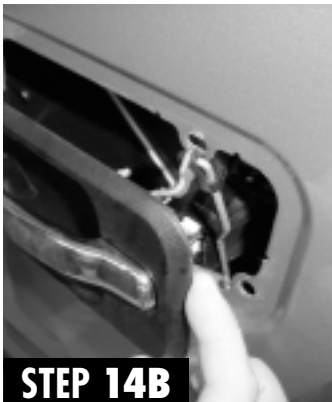


STEP 13B

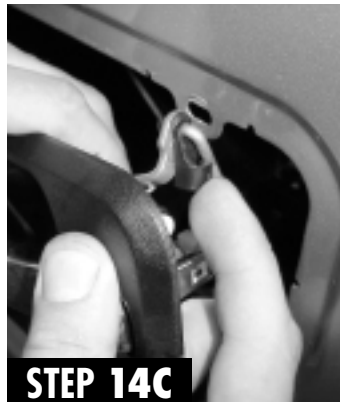


STEP 14A

STEP 14. Pull the door handle assembly out of the vehicle and unclip the upper rod clip.



STEP 14B



STEP 14C



STEP 15

STEP 15. Remove the door handle and door handle bezel assembly from the truck.



STEP 16

STEP 16. This is what the door handle assembly looks like when removed from your H2.



STEP 17

STEP 17. With possible assistance from another person, hold one end of the door handle pin with pliers and drill out the other end. (You can also use a grinder)



STEP 18

STEP 18. Remove the drilled out pin from the door handle assembly.



STEP 19A

STEP 19. With a pair of pliers, clamp the one end of the plastic spring pin and pull it out of the door handle bezel assembly. Note: Remember the location of the spring because it will have to go back in the same position on your new billet piece.



STEP 19B

**STEP 20**

STEP 20. Remove the door handle from the door handle bezel.

**STEP 21**

STEP 21. Remove the black plastic clip from the door handle bezel.

**STEP 22**

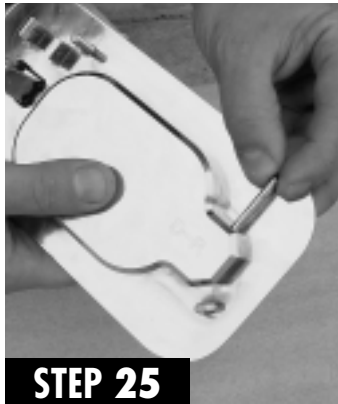
STEP 22. This is what the entire door handle assembly should look like fully disassembled.

**STEP 23**

STEP 23. Now take your new billet door handle bezel and replace the black plastic handle clip.

**STEP 24**

STEP 24. Replace the factory door handle or new billet door handle in the billet door handle bezel.

**STEP 25**

STEP 25. Replace the drilled out metal pin with your new pin included in the kit and put it back through the door handle. Note: A hammer may be required for a little friendly persuading.

**STEP 26**

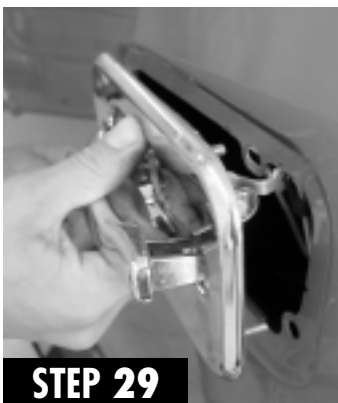
STEP 26. Realign the spring setup and replace the plastic door handle pin with your new metal pin and pit it through the door handle bezel.

**STEP 27**

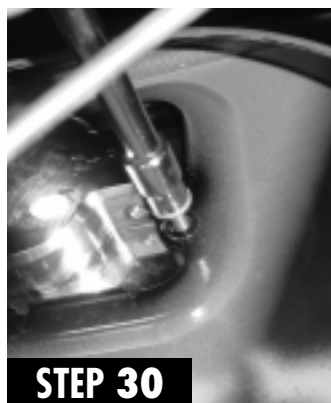
STEP 27. This is what your door handle bezel should look like now with the plastic pin in place.

**STEP 28**

STEP 28. Replace the door handle rod back into the rod clip and make sure that it is back in the correct position.

**STEP 29**

STEP 29. Replace the door handle assembly back in the door.

**STEP 30**

STEP 30. Replace the three 10mm bolts into the door handle assembly. Do NOT over tighten, and check for proper alignment.

**STEP 31**

STEP 31. Replace the two clear plastic tabs over the bolt holes. (Depending on the model year, replace the two rubber plugs.)



STEP 32

STEP 32. Realign the colored insulation and press firmly against the door.



STEP 33

STEP 33. Popout the door lock switch from the door panel.

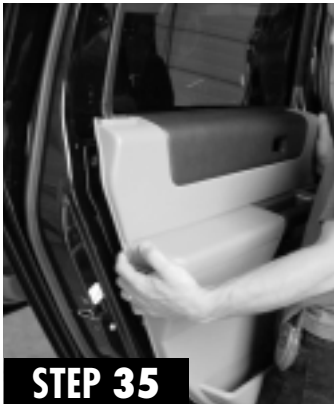


STEP 34A

STEP 34. Reconnect the power window switch plug and put the courtesy light back in place.



STEP 34B



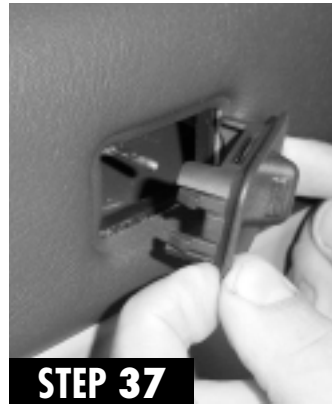
STEP 35

STEP 35. Realign the door panel and push back into locking position.



STEP 36

STEP 36. Replace the upper panel.



STEP 37

STEP 37. Line up the door lock and door lock switch. Push the door lock switch back into place.



STEP 38

STEP 38. Replace the two 7mm bolts that go behind the interior door handle bezel.



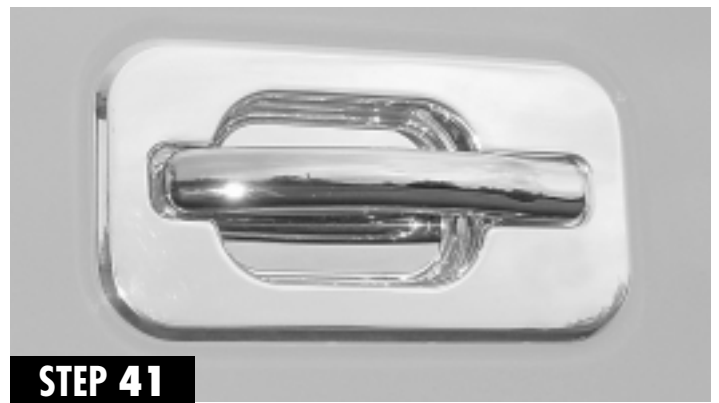
STEP 39

STEP 39. Replace the interior door handle bezel around the interior door handle.



STEP 40

STEP 40. Replace the Phillips head screw behind the interior door handle into the interior door handle bezel.



STEP 41

STEP 41. Take a break and admire how much better your H2 looks now!



REALWHEELS COVER COMPANY, INC.

3940 Tannahill Drive • Gurnee, IL 60031 • 847-662-7722 • Fax 847-662-7744 • www.realwheelsacc.com
info@realwheelsacc.com • toll-free 1-800-982-1180